

Alex Ngoasong

Leading in Times of Change

IN EVERY COMMUNITY AFFECTED BY HARDSHIP, THERE REMAINS ONE POWERFUL FORCE THAT CANNOT EASILY BE DESTROYED: HOPE.



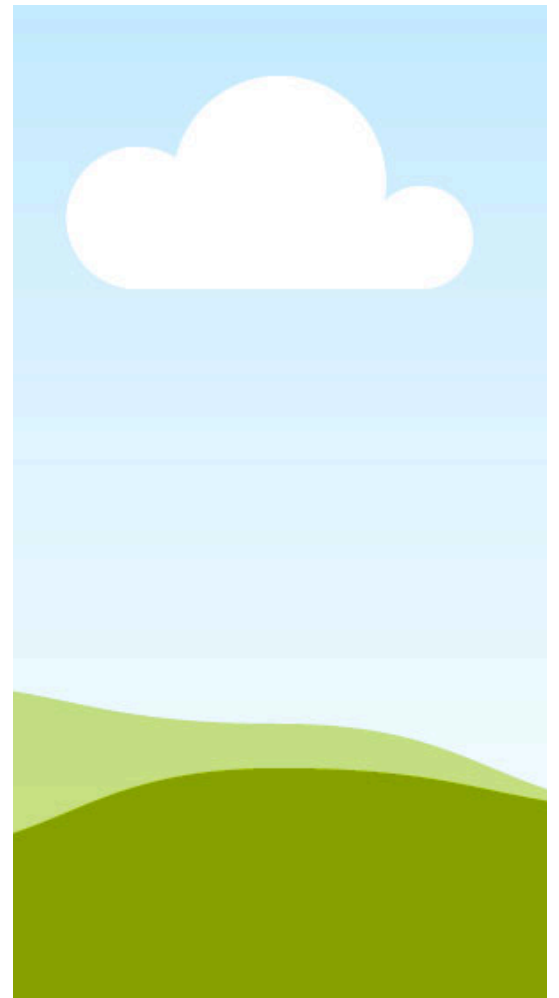
SPECIAL REPORT

Global community outreach organisation

The bridge rehabilitation project in Menji

THIS MAGAZINE HIGHLIGHTS SOME OF THE RECENT INITIATIVES CARRIED OUT BY GLOBAL COMMUNITY OUTREACH IN MENJI AND FONTEM.

Table Of Contents



05

About GCOO

Building Communities Through
Compassion and Action

07

Education Support in Fontem

Investing in Young Minds

09

The Crisis in Lebialem

Resilience in the Face of Adversity

11

COMMUNITY PARTICIPATION AND VOLUNTEERISM

Profiles of startups disrupting
traditional business models

13

Rebuilding the Menji Bridge

More Than a Bridge

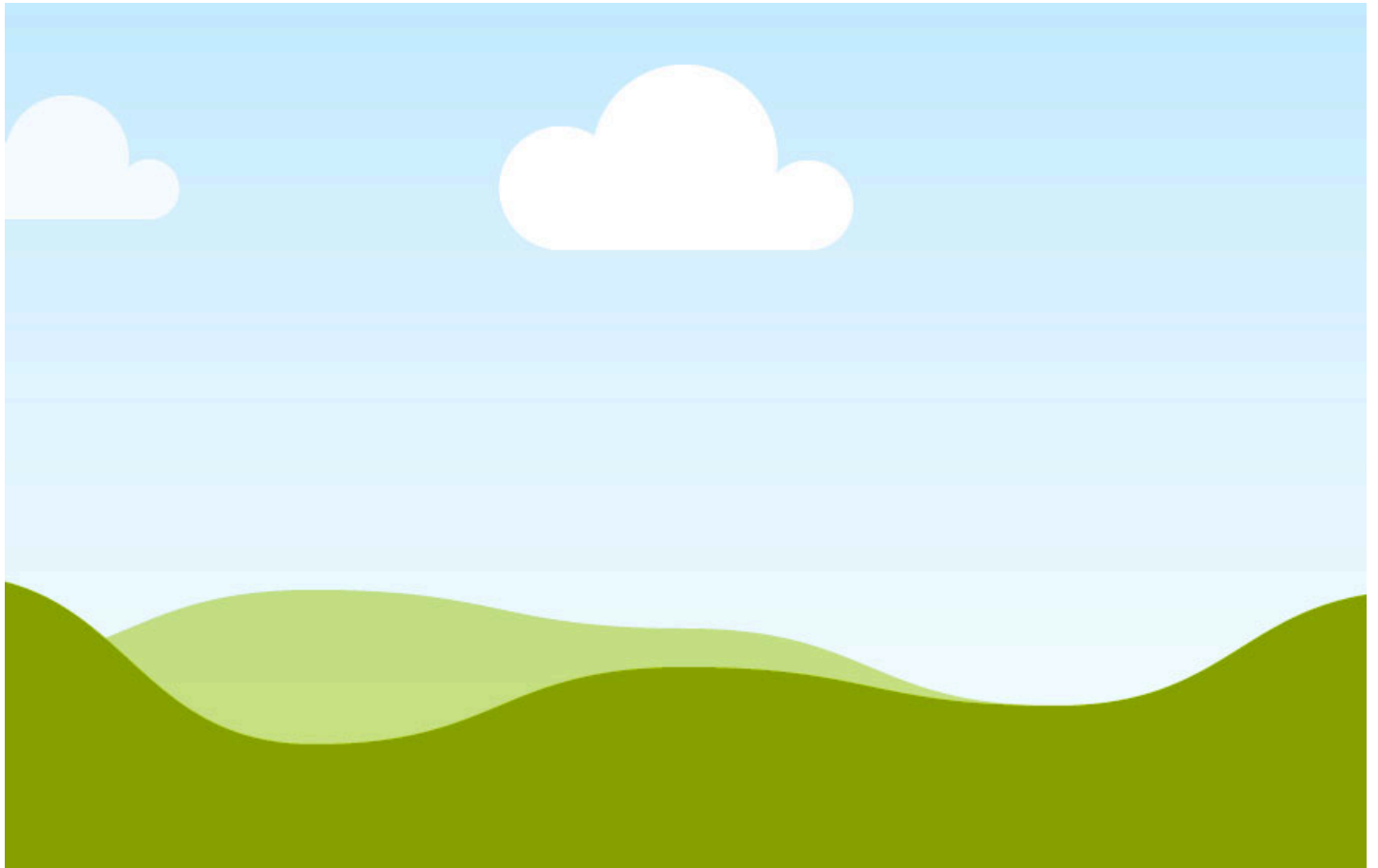
15

Looking Ahead

The importance of sustainability in
business strategy

Ginyard Magazine

CREATIVE
TEAM



Harumi Kobayashi

Editor-in-Chief

Estelle Darcy

Beauty & Wellness Editor

Francisco Andrade

Creative Director

Marceline Anderson

Writer & Content Creator

Noah Schumacher

Fashion Editor

Kimberly Nguyen

Photographer



Website

www.reallygreatsite.com



Address

123 Anywhere St., Any City



ABOUT GLOBAL COMMUNITY OUTREACH ORGANISATION

Building Communities Through Compassion and Action



Global Community Outreach is a community-driven humanitarian and development organization committed to improving lives through sustainable social impact initiatives. Guided by the principles of compassion, service, and community empowerment, the organization works alongside local populations to address urgent needs while promoting long-term development.

In regions affected by instability and economic hardship, access to basic services and opportunities often becomes increasingly difficult. GCOO believes that meaningful development begins with listening to communities, understanding their realities, and responding with practical and people-centered solutions.

The recent interventions carried out in Menji and Fontem demonstrate this commitment. By supporting the reconstruction of a damaged community bridge and donating educational materials to schools, the organization sought not only to meet immediate needs but also to restore hope and strengthen community resilience.

GIVING CLASSROOM SUPPLIES TO SCHOOLS
IN FONTEM

The Crisis in Lebialem

Resilience in the Face of Adversity

For several years, communities across the Lebialem Division in Cameroon's Southwest Region have experienced the effects of socio-political instability that has significantly impacted daily life. Movement between villages became difficult, economic activities slowed, schools faced disruptions, and access to healthcare and other essential services became increasingly challenging for many families.

Infrastructure damage remains one of the most visible consequences of the crisis. Roads, bridges, and public facilities in some areas suffered deterioration or destruction, affecting transportation and limiting access between communities.

In many rural communities, bridges play a critical role in connecting people to markets, schools, hospitals, and neighboring villages. When these structures become damaged, the impact extends far beyond transportation. It affects livelihoods, education, trade, healthcare access, and social interaction.

Recognizing these realities, organizations such as GCOO have stepped forward to support recovery efforts through practical community-centered initiatives designed to restore access and strengthen hope.

While the road to recovery continues, every effort toward rebuilding infrastructure and supporting education represents an important step toward restoring normalcy and creating opportunities for future generations.

PHOTOGRAPHY BY
ANNA KATRINA MARCHESI



Rebuilding the Menji Bridge

More Than a Bridge

In communities across rural Cameroon, bridges are lifelines. They connect families to schools, farmers to markets, patients to healthcare facilities, and entire communities to opportunity. In Menji, the headquarters of the Lebialem Division, the destruction of a key bridge during the ongoing crisis created serious challenges for residents and travelers alike.

For many members of the community, movement became increasingly difficult and, at times, unsafe. Transportation of goods slowed, access to essential services became more complicated, and daily activities were disrupted.



Challenges faced during the process

Understanding the importance of restoring safe access, Global Community Outreach launched an initiative to rehabilitate the damaged bridge in collaboration with community members and local stakeholders.

The reconstruction effort involved extensive community participation and demonstrated the power of collective action. Local residents, volunteers, and workers contributed their time, energy, and commitment toward restoring this critical structure.

ADDRESS TO MAYOR OF MENJI



Contact : (+237) 676 285 970
08th April 2026

To : The LORD MAYOR
MENJI RURAL COUNCIL
MENJI TOWN – FONTEM

Dear Sir: A REQUEST TO EXECUTE SOME LIGHT REPAIR WORK ON THE MARY HEALTH OF AFRICA HOSPITAL BRIDGE.

Sir, we are the **Global Community Outreach Organisation**; a small humanitarian organisation whose main objective is to assist local communities in any ways that can not only help the greater majority of its people, but also make life easier for them.

Sir, sometimes about two months ago, myself and a few other people had the opportunity to visit our village and home town **Menji**, which happens to be the **head quaters of Fontem Sub Division in Lebialem Division**.

As we got to the "Mary health of Africa hospital and about crossing the major bridge in front of the hospital for Menji, our vehicle got hooked on top of the bridge. It took us about 45 minutes to get across the bridge only. Why? Because of the very bad and dilapidated state of the bridge. I found that, any little mistake crossing the bridge could easily land someone or why not all of us down the river.

As we finally got back home, we have been pondering over the ordeal; pondering over the fate of the multitude who go across that bridge everyday.

Consequently, as our small goodwill gesture, we as the "Global Community Outreach Organisation" are contemplating to do a small job on that hospital bridge to lessen the risks that

1

our parents, our sisters and brothers go through every single day. We must not wait until many fall and die on that bridge before something is done.



As a result, Sir, we plan to purchase some **twenty (20) Boards of "Very Strong Wood"** and have it mounted on top of the bridge, to facilitate an easy pathway through which, both **pedestrians and vehicles** can easily cross that bridge with relative ease and lesser danger.

If all is OK by you Sir, then we might actually purchase the **twenty (20) boards** and bring them down to Nveh in Menji, and have the job executed between **Monday 13-04-26 and Wednesday 15-04-26**.

Sir, we are writing to you because we know the importance of not only seeking your authorisation, but keeping you informed of everything we have in mind about your community.

N.B: important to note that **our gesture has zero political undertone**.

While we hope we meet on the above date Sir,

We remain yours.

Alexander NGOASONG

CEO Global Community Outreach Organisation,

NJIKIA Oliver

Field coordinator.

2

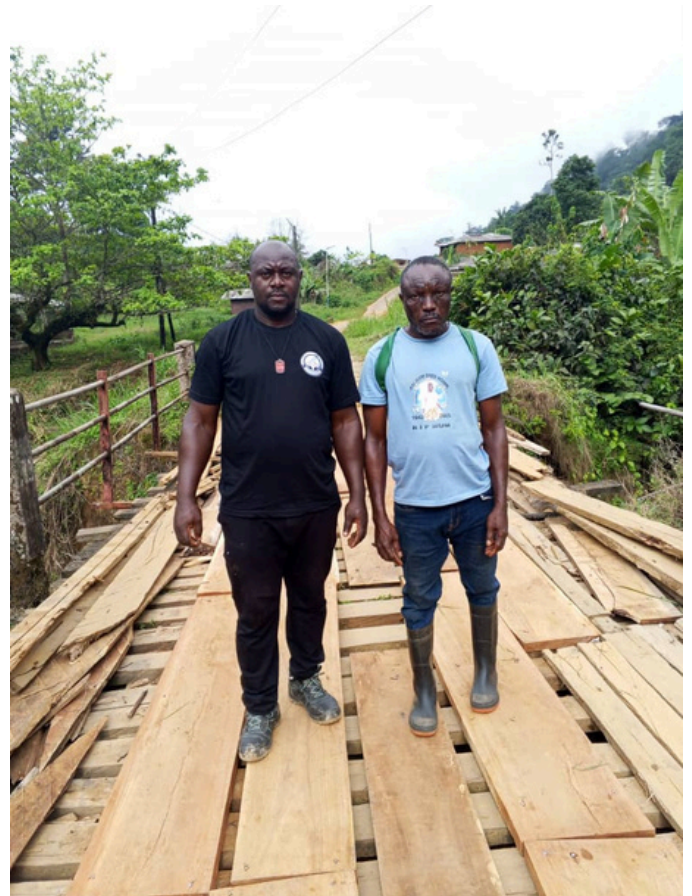
All Hands on Deck

Beyond the physical reconstruction, the project symbolized something deeper: resilience, unity, and the determination of communities to rebuild despite adversity.

Today, the rehabilitated bridge once again serves as an important connection point for residents in and around Menji. Farmers can transport produce more easily, students can travel with greater safety, and movement between communities has improved.

For many residents, the bridge stands not only as a structure of wood and support beams, but as a visible sign of progress and renewed hope for the future.

Team on ground



Education Support in Fontem

Investing in Young Minds

Education remains one of the most powerful tools for rebuilding communities and shaping the future of young people. In conflict-affected areas, however, access to learning resources often becomes limited as schools struggle with shortages and disruptions.

Recognizing the importance of supporting education in Lebialem Division, Global Community Outreach carried out a donation of books and educational materials to schools in Fontem, including Government High School Fontem and Seat of Wisdom College.

The initiative aimed to encourage learning, support teachers and students, and contribute to improving access to educational resources within the community.

For many students, books represent more than academic material. They provide opportunity, knowledge, imagination, and hope for a brighter future. Educational support initiatives also serve as reminders that young people should not be forgotten during times of crisis.

Teachers and school administrators welcomed the donation as an important contribution toward strengthening learning conditions for students. The activity also created moments of encouragement and interaction between volunteers, educators, and learners.



ARTICLE FROM THE STAR NEWSPAPER

Issue: 671 | www.thstaronline.com | Monday December 19, 2026 | SP HE

Back To Your Community Initiative: Based Alex Ngoasong, wife bringing education in Lebang



Mr. Alex Ngoasong (left) poses with Fon of Fontem during the 2025 USA convention in Boston



Mr. Alex Ngoasong (first from right) & others brandishing donated items



Students of Wisdom College Fontem students brandishing donated exercise books

schools and school going children last December. They comprise of 3,000 exercise books, 600 ledgers, 40 drinking buckets, 40 drinking jugs and 80 drinking cups. Several primary and secondary schools as well as thousands of

learners benefited from the charity. The institutions that benefited from these supplies include: Mutual Love, Parent Remedial Nursery & Primary School, Standard Primary School, Njeh Nursery and Primary School, Bright Star Njente, Nkah NP, Quibeku Nkongmbong, Nchenfem NP, Njah, Nkah, Lekong NPS Fanye, Mbinda, Catholic NPS, Njenacha, Nchenbim, Beteten NPS, Our Lady Seat of Wisdom College Fontem, GTTC Fontem, GBHS Fontem, GTC Fonge, GTHS Fontem, GHS Azi-Fontem, Morning Star and Nkoti. While the books are intended to help the pupils and students carry on with their studies, the other items are destined to improve hygiene in the various schools. This activity was made possible through the commitment of the Global Community Outreach founder and the generous support of Dr. Formingia Julius and Dr. Mrs Formingia Yvonne, alongside other well-wishers who believe in the vision of restoring dignity and opportunity to children in need. One of the beneficiary pupils, speaking on behalf of his peers said: "We are grateful to Mr Alex Ngoasong for these books which will help us to study and pass our exams. We promise the donor that we shall not fail him; he should keep supporting us because education is the key." LECUDO leadership, others salute initiative The books and other essential materials had earlier been presented to LECUDO General President, Barrister Nkea Emmanuel in Buea last year before being transported to Fontem. A gesture saluted by the community leader, who said: "I will take this opportunity to express our sincere thanks for this marvelous gesture and to tell him that we'll make sure these didactics are used adequately," he said. On the occasion, the wife of the donor said she and her husband felt the urge to support the younger generation by preparing a bet-

ter future for them through education. On his part, Dr Julius Formingia who supported the initiative of Alex Ngoasong and wife expressed admiration for their drive to build Lebang through education. "I'm so appreciative of what Alex and wife have done and it touches my heart. When I see him, he's still struggling; it's not been long he came to the USA but he didn't say let me wait and make more money before a make an impact in my community. He has sacrificed time and money to make sure he can also create an impact on the lives of our young people back in Lebang," Dr Formingia had said during the LECUDO USA Convention in Boston. He went on: "If you see how he sacrificed to get these books to donate for free; it's not a given. This is what young people should emulate, you don't have to have a lot in order to cause a change." His Royal Majesty the Fon of Fontem encouraged other youth in his Fomdom to emulate the example of Alex Ngoasong, stating that his initiative was worthwhile. Future plan Through the Outreach, I looks forward a legally recommended philanthropic intervention with organ individuals contribute, ly, or logist long-term provide im foster comm equally env



Dr Formingia & wife made huge support

REPUBLIC OF CAMEROON
PEACE - WORK - FATHERLAND
MINISTRY OF DECENTRALIZATION AND LOCAL DEVELOPMENT
SOUTH WEST REGION
LEBIALEM DIVISION
FONTEM SUB-DIVISION
MENJI COUNCIL
P.O. BOX 5, FONTEM
Website: www.MenjiCouncil.com
E-mail: MenjiCouncil@yahoo.com

REPUBLIQUE DU CAMEROUN
PAIX - TRAVAIL - PATRIE
MINISTRE DE LA DECENTRALISATION ET DU DEVELOPPEMENT LOCAL
REGION DU SUD OUEST
DEPARTEMENT DU LEBIALEM
ARRONDISSEMENT DE FONTEM
COMMUNE DE MENJI
BP 05, FONTEM
Website: www.MenjiCouncil.com
E-mail: MenjiCouncil@yahoo.com

Date: 20/12/2026
Ref No 42 /MINNDEVEL/SWRLD/MC/SG/2026

THE LORD MAYOR
MENJI COUNCIL
TO
THE CHIEF EXECUTIVE OFFICER (CEO)
GLOBAL COMMUNITY OUTREACH ORGANIZATION

SUBJECT: LETTER OF APPRECIATION

On behalf of the population Menji Municipality particularly that of Menji town and environs as well as the users of the Dschang - Menji - Bakebe road in general, I write to appreciate your organization for the wonderful intervention you made on the bridge linking Mveh and Menji Town. This milestone has come on time to bring hope to the entire population of Menji Municipality. I encourage you not to limit your act of generosity to Menji town but to extend it to the nooks and crannies of the municipality under your packages of Corporate Social Responsibility (CSR).

Accept, Mr CEO, my esteem regards.

Signature: *Alain N. Nkomo*
LORD MAYOR
MENJI COUNCIL

- SDO-Lebialem Division
- DO-Fontem Sub Division
- File

MAYOR OF MENJI RESPONDS

Despite the many challenges facing schools in crisis-affected regions, the determination of students to continue learning remains inspiring. Across classrooms in Fontem, young people continue to pursue their dreams with courage and resilience.

By investing in education today, communities invest in future leaders, professionals, and changemakers who will contribute to rebuilding society tomorrow.



COMMUNITY PARTICIPATION AND VOLUNTEERISM

Working Together for Lasting Impact



VOLUNTERES

The bridge rehabilitation project demonstrated the importance of collective responsibility and local participation. Community members worked alongside organizers and volunteers, reinforcing the idea that sustainable development is strongest when communities are directly involved.

Community development is most effective when local residents actively participate in the process of rebuilding and transformation. One of the most remarkable aspects of the recent initiatives carried out in Menji and Fontem was the strong involvement of community members and volunteers.

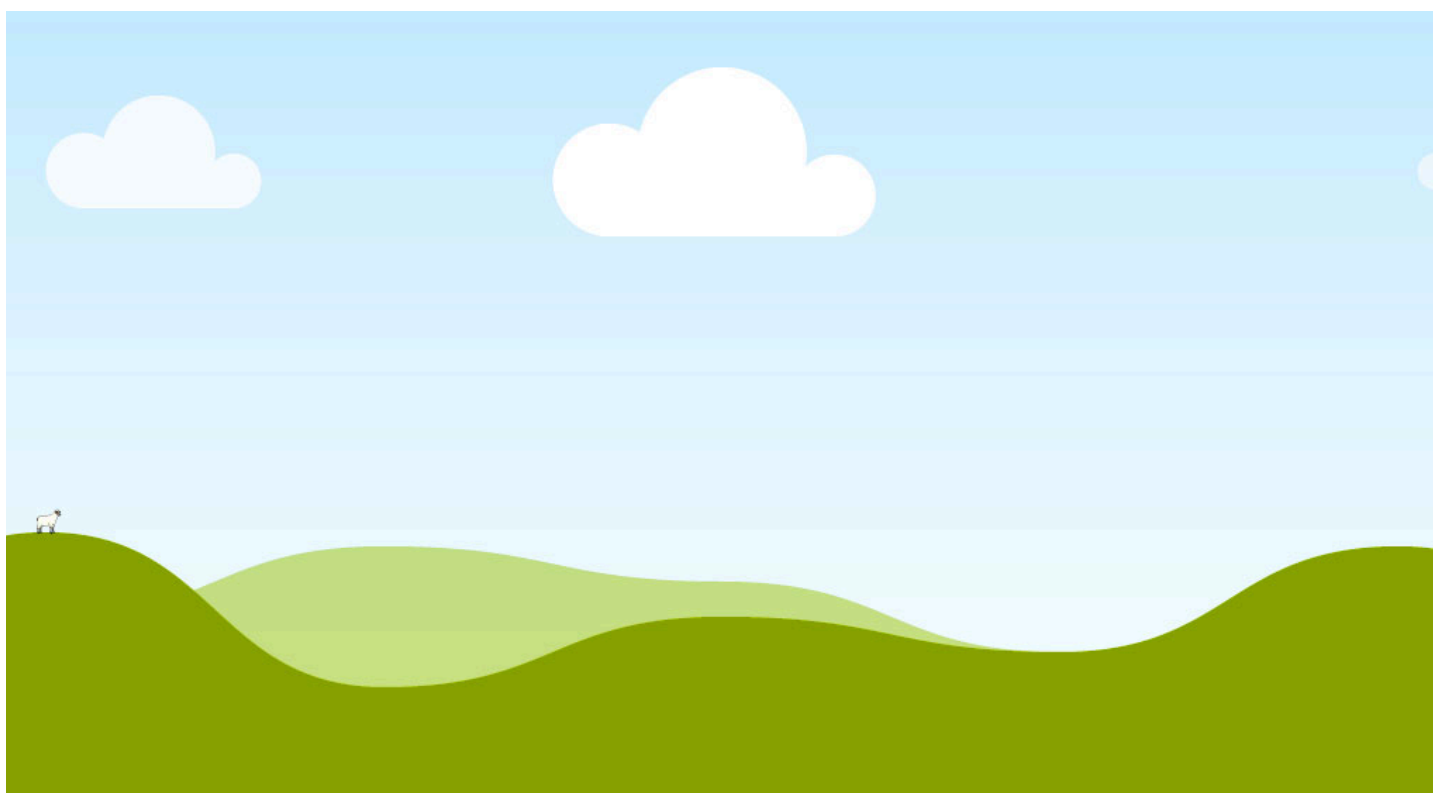
Volunteerism plays an essential role in humanitarian and development work. Beyond financial support and material donations, genuine progress often depends on people who are willing to serve others with compassion and commitment.

Similarly, the educational outreach activities in Fontem created opportunities for meaningful engagement between students, teachers, volunteers, and local leaders.

Acts of service, no matter how small, contribute to building stronger and more connected communities. Through unity, collaboration, and shared purpose, positive change becomes possible.

LOOKING AHEAD

Continuing the Journey of Restoration



While important progress has been made through recent initiatives in Menji and Fontem, the journey toward recovery and sustainable community development continues.

Communities across Lebalem Division still face various social, economic, and infrastructural challenges that require ongoing support, collaboration, and investment. However, projects such as bridge rehabilitation and educational assistance demonstrate that meaningful impact is possible when organizations, volunteers, and local communities work together.

Global Community Outreach remains committed to supporting initiatives that strengthen communities, improve access to opportunity, and promote hope in areas affected by hardship.

Future efforts will continue to focus on community-centered development, education support, humanitarian outreach, and initiatives that improve everyday life for vulnerable populations.

As communities rebuild and recover, partnership and solidarity remain essential. Every contribution, every act of service, and every effort toward rebuilding helps create a stronger foundation for future generations.

The story of Menji and Fontem is not only one of challenge, but also one of resilience, unity, and hope. It is a reminder that even in difficult times, communities can rise, rebuild, and move forward together.

ACKNOWLEDGEMENTS

Gratitude to Our Partners and Communities

Global Community Outreach extends sincere appreciation to all individuals, institutions, and community members who contributed to the success of the recent initiatives carried out in Menji and Fontem.

We are grateful to:

- **Local community leaders**
- **Traditional authorities**
- **Volunteers and field workers**
- **Teachers and school administrators**
- **Students and parents**
- **Donors and supporters**
- **Community members who participated in the reconstruction activities**

Your support, collaboration, and dedication made these projects possible.

Together, we continue to restore hope, strengthen communities, and create opportunities for a brighter future.



ISSUE 01

JUNE

GCOO